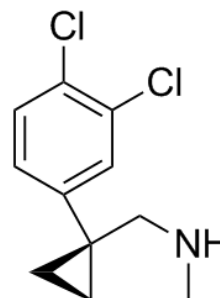


**Product Name** : Amitifadine hydrochloride  
**Cat. No.** : PC-45454  
**CAS No.** : 410074-74-7  
**Molecular Formula** : C<sub>11</sub>H<sub>12</sub>Cl<sub>3</sub>N  
**Molecular Weight** : 264.5787  
**Target** : Monoamine Transporter  
**Solubility** : 10 mM in DMSO



H-Cl

### Biological Activity

Amitifadine hydrochloride (DOV-21947 hydrochloride) is a **triple monoamine reuptake inhibitor** that inhibits the reuptake of [3H]serotonin, [3H]norepinephrine, and [3H]dopamine in HEK 293 cells expressing the corresponding human recombinant transporters (IC<sub>50</sub> values of 12, 23, and 96 nM, respectively).

Amitifadine hydrochloride reduces the duration of immobility in the forced swim test in rats with an oral minimum effective dose (MED) of 5 mg/kg.

### References

Skolnick P, et al. *Eur J Pharmacol.* 2003 Feb 14;461(2-3):99-104.

Warnock KT, et al. *Pharmacol Biochem Behav.* 2012 Nov;103(1):111-8.

**Caution: Product has not been fully validated for medical applications. Lab Use Only!**

E-mail: tech@probechem.com